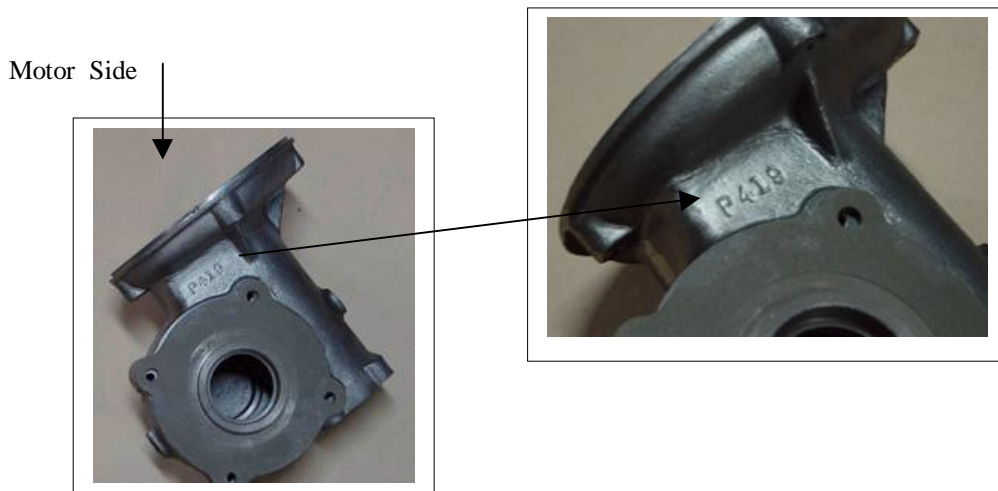
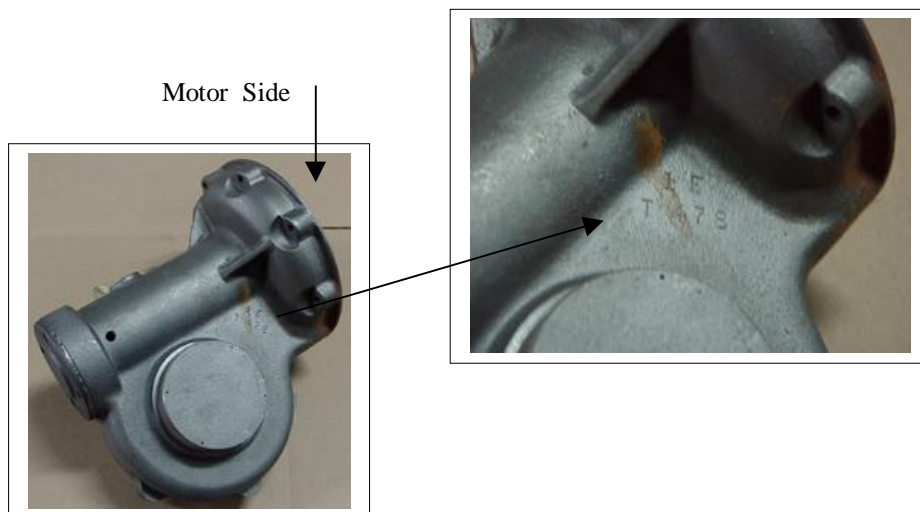


### How to Identify an Electrolift Worm Drive Gearbox

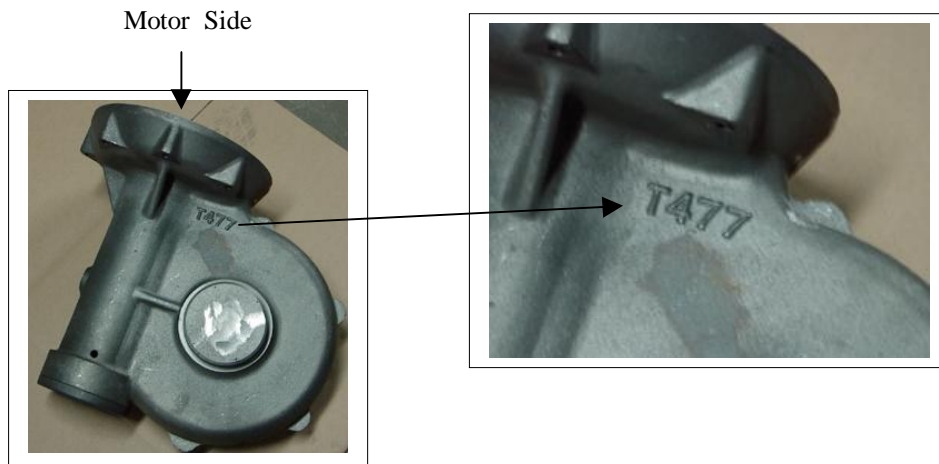
To identify any Electrolift hoist gearbox, find the part number that is either cast or stamped onto the gearbox. Each gearbox shown is appropriate for a single drum or twin drum hoist. The pictures below show each type of gearbox, the part number, and where the part number is located. For a hoist with a spur gearbox, see page 2 for identification.



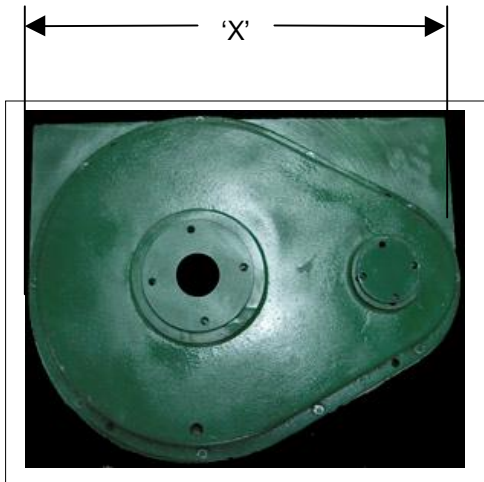
Type "M" Gear Box  
P-419



Type "A" or "AB" Gear Box  
T-478

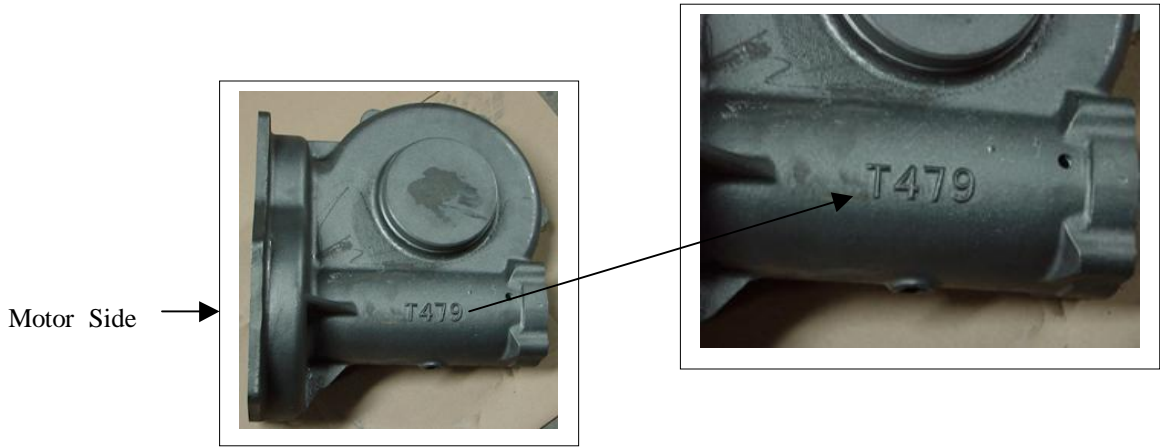


Type "B or "BC" Gear Box  
 T-477  
 \*see Spur Gearbox  
 Identification below

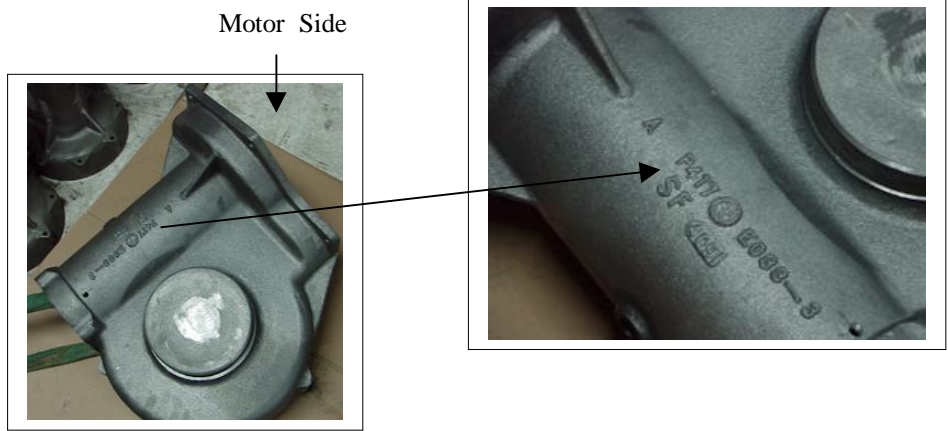


Spur Gearbox Identification for 'AB' and 'BC' Hoists

Hoist Type	'X'
AB	12 5/8
BC-3P	26 1/8
BC-4P	20 1/4



Type "C" Gear Box  
T-479



Type "D" Gear Box  
P-417