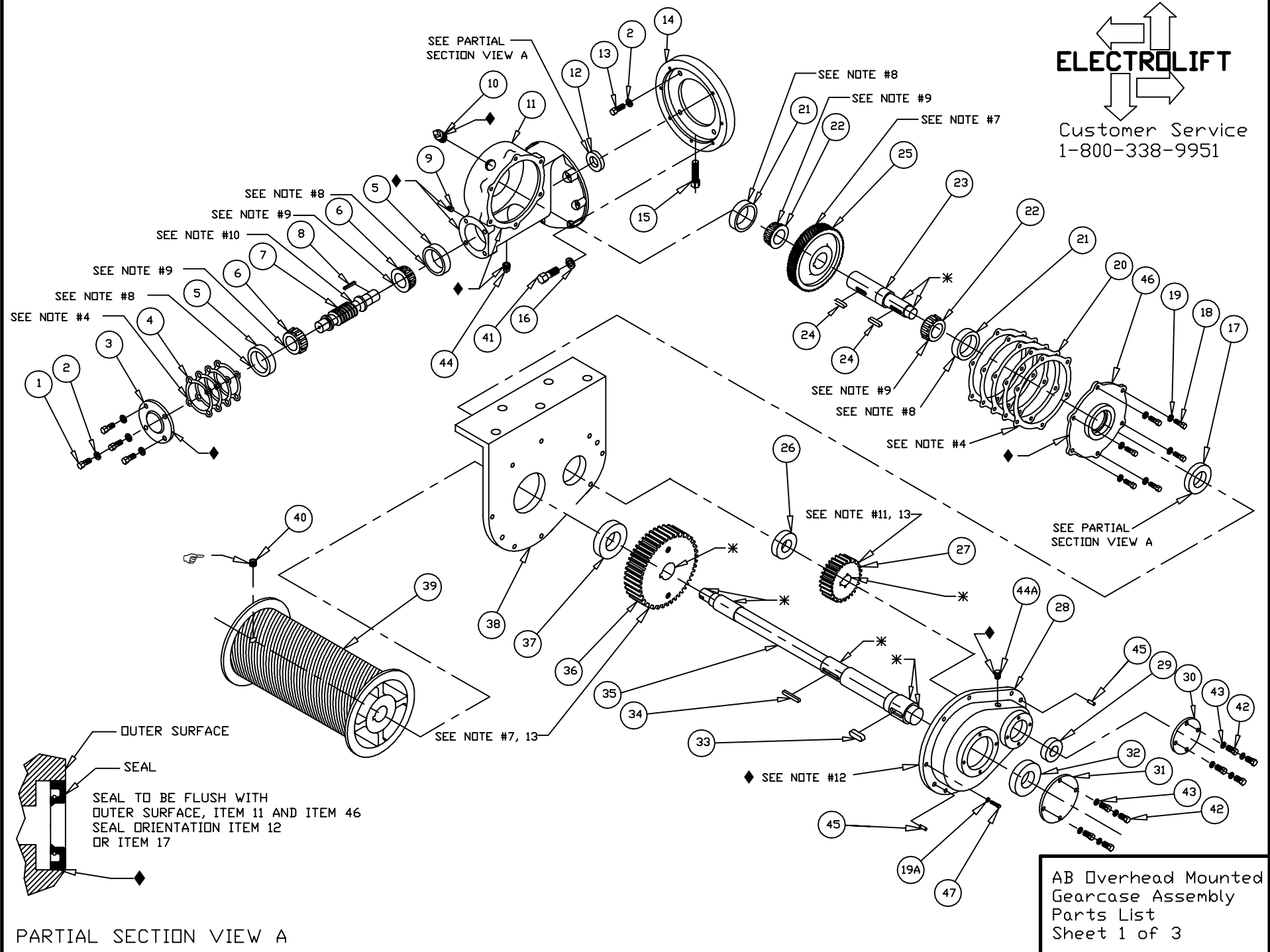
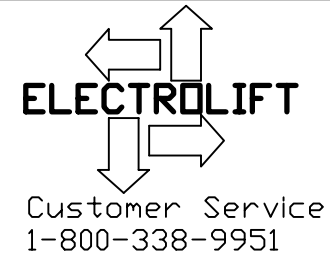


**ELECTROLIFT**  
 Customer Service  
 1-800-338-9951





29	DM7002	1	BEARING, BALL, 6205ZZ, .98ID, 2.04 OD, .59W ☒SEE NOTE D
28	K943	1	COVER, SPUR GEAR, AB-SH -- SEE NOTE #14
27	----	1	PINION, JOB SPECIFIC
26	DM7019	1	BEARING, BALL, 6206ZZ, 1.18 ID, 2.44OD, .62 W ☒SEE NOTE D
25	----	1	WORM WHEEL, SEE NOTE #5
24	K10849P4	2	KEY, 5/16x5/16, 1-1/4, "A" WORM WHEEL
23	K942	1	PINION SHAFT, AB
22	DM7003	2	BEARING, TRB, CONE, 1.50 ID ☒SEE NOTE B
21	DM7004	2	BEARING, TRB, CUP, 3.00 OD ☒SEE NOTE B
20	K10753	1	KIT, SHIM, A-HOIST, SIDE COVER
19A	FS312	10	WASHER,L,5/16 - SEE NOTE #14 FOR FS124
19	FS312	6	WASHER,L,5/16 ☒SEE NOTE A
18	FS122	6	SCREW,HHCS,5/16-18x7/8 ☒SEE NOTE C
17	DM7028	1	SEAL, SHAFT, 1.5 ID, 2.37 OD ☒SEE NOTE C
16	FS310	7	WASHER,L,1/4 ☒SEE NOTE A
15	FS235	1	SCREW,FLAT HEAD MACHINE SCREW,1/2-13x1-1/2 ☒SEE NOTE A
14	M2960	1	ADAPTER, MOTOR
13	FS129	4	SCREW,HHCS,3/8-16x1 ☒SEE NOTE A
12	DM7216	1	SEAL, SHAFT, 1 ID, 1.82 OD ☒SEE NOTE C
11	T478	1	GEAR CASE, A HOIST
10	FS337	1	PIPEPLUG,1/2 SQHD CORE,W/VENT ☒SEE NOTE A
9	FS336	1	PIPEPLUG,1/8 SQHD, SOLID ☒SEE NOTE A
8	K10845P2	1	KEY, 3/16x3/16, 1-1/16, A MOTOR
7	----	1	WORM SHAFT, SEE NOTE #5
6	DM7000	2	BEARING, TRB, CONE, 1 ID ☒SEE NOTE B
5	DM7001	2	BEARING, TRB, CUP, 2.56 OD ☒SEE NOTE B
4	K10754	1	KIT, SHIM, A-HOIST, END COVER
3	K101	1	COVER, END, GEAR CASE, A
2	FS315	8	WASHER,L,3/8 ☒SEE NOTE A
1	FS466	4	SCREW,HHCS,3/8-16x7/8 ☒SEE NOTE A
ITEM #	PART #	QTY	DESCRIPTION

BILL OF MATERIALS

48	K10849P6	1	KEY, 5/16x5/16, 1-3/8, AB PINION SHAFT
47	FS124	10	SCREW,HHCS,5/16-18x1-1/4 -- SEE NOTE #14
46	M304A	1	COVER, SIDE, GEAR CASE, A
45	FS413	2	PIN, ROLL, 3/8x1-1/4 -- SEE NOTE #14
44A	FS333	1	PIPEPLUG,1/2 SQHD CORED ☒SEE NOTE E
44	FS333	1	PIPEPLUG,1/2 SQHD CORED ☒SEE NOTE A
43	FS310	8	WASHER, L, 1/4 ☒SEE NOTE E
42	FS114	8	SCREW,HHCS,1/4-20x1 ☒SEE NOTE E
41	FS571	7	SCREW,HHCS,1/4-20x1-1/2 ☒SEE NOTE A
40	FS445	1	SOCKET HEAD SET SCREW 3/8-16x1/2, KNURLED
39	----	1	DRUM, JOB SPECIFIC
38	M2829P2	1	PLATE,SIDE,AB-BM-OVR -- SEE NOTE #14
37	DM7017	1	BEARING, BALL, 6209ZZ, 1.77ID, 3.34 OD, .74 W ☒SEE NOTE D
36	----	1	GEAR, JOB SPECIFIC
35	----	1	DRUM SHAFT, JOB SPECIFIC
34	K10849P5	1	KEY, 5/16x5/16, 2, A+B DRUM SHAFT
33	K10910P6	1	KEY, 1/2x1/2x1-1/2
32	DM7021	1	BEARING, BALL, 6208ZZ, 1.57 ID, 3.14 OD, .70 W ☒SEE NOTE D
31	K900PA22	1	COVER, BALL BRG, BASE MTD HOIST
30	K900P1	1	COVER, BALL BRG, BASE MTD HOIST
ITEM #	PART #	QTY	DESCRIPTION

\*SEE NOTE #14 & KIT NOTES A-E  
ON SHEET 3

AB Overhead Mounted  
Gearcase Assembly  
Parts List  
Sheet 2 of 3

NOTES:

- 1) \* - APPLY ANTISEIZE COMPOUND
- 2) ♦ - SEE LAST SHEET FOR LOCTITE SEALANT AND GASKET APPLICATION INSTRUCTIONS.
- 3) ☞ - APPLY BLUE TYPE THREADLOCK COMPOUND, TORQUE TO 24 FT-LBS
- 4) USE THE SAME AMOUNT AND COLOR OF SHIMS AS ORIGINAL SET.
- 5) IDENTIFICATION CHART

NO OF TEETH	WORM WHEEL P/N	WORM SHAFT P/N
44	M302	M301 P1
55	M2856A	M2855
64	K903A	K940

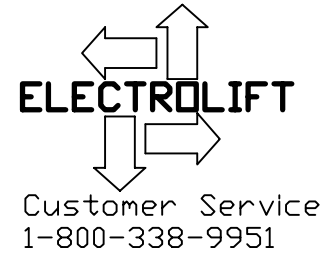
- 6) OIL CAPACITY 12 OZ.  
 EXXON CYLESSTIC TK680 OR EQUIV. E/L P/N DM7146  
 OR MOBIL SHC 634 OR EQUIV. (SYNTHETIC) E/L P/N DM7381
- 7) PRESS ITEM 36 ONTO ITEM 35 CENTRALLY LOCATED ON ITEM 33
- 8) PRESS ITEM INTO MATING HOUSING OR COVER
- 9) TO BE PRESSED ON MATING SHAFT
- 10) TAP WITH MALLET AFTER PRESSING ITEM 5
- 11) PRESS ITEM 27 ONTO ITEM 23 CENTRALLY LOCATED ON ITEM 24
- 12) COAT ALL TEETH WITH EXXON RONEX MP GREASE P/N DM7154.  
 ITEM 28 IS TO BE AT APPROX. 50% CAPACITY  
 FULL OF GREASE WHEN SEALED.

13) IDENTIFICATION CHART

PINION- THE SMALLER OF THE TWO GEARS  
 GEAR- THE LARGER GEAR  
 PINIONS AND GEARS ARE MATCHED SETS AS KITS

KIT	# TEETH	GEAR P/N	# TEETH	PINION P/N
K11196P1	37	K946P22	20	K946P20
K11196P2	38	K946P18	19	K946P16
K11196P3	39	K946P23	18	K946P11
K11196P4	40	K946P14	17	K946P9
K11196P5	41	K946P15	16	K946P5
K11196P6	42	K946P19	15	K946P1
K11196P7	43	K946P13	14	K946P3
K11196P8	44	K946P24	13	K946P25

- 14) K943 & M2829P2 ARE NOT AVAILABLE INDIVIDUALLY. THEY ARE AVAILABLE ONLY AS MATCHED SET M12428, ALONG WITH NOTED HARDWARE.



☒ KIT NOTES:

- A) THIS PART CAN ONLY BE ORDERED AS PART OF GEARCASE HARDWARE KIT #K11292.
- B) THIS PART CAN ONLY BE ORDERED AS PART OF GEARCASE BEARING KIT #K11151.
- C) THIS PART CAN ONLY BE ORDERED AS PART OF SEAL KIT #K11152.
- D) THIS PART CAN ONLY BE ORDERED AS PART OF SPUR GEARBOX BEARING KIT #K11154.
- E) THIS PART CAN ONLY BE ORDERED AS PART OF SPUR GEARBOX HARDWARE KIT #11261.
- F) FOR BOTH SEALS & SHIMS, ORDER SEAL & SHIM KIT #K11278.

AB Overhead Mounted  
 Gearcase Assembly  
 Parts List  
 Sheet 3 of 3

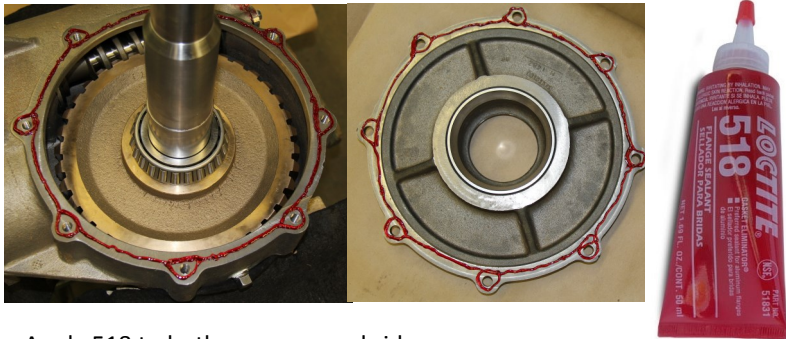
# Type 'A', 'B', and 'BC' Hoist Gearbox

Notes:

1. Required components: 518 Gasket Eliminator, 565 Pipe Sealant, 598 RTV, and 7649 Primer
1. All metal surfaces to be cleaned with brake cleaner, acetone, or Loctite Cleaner/Degreaser. After cleaning, all surfaces will be wiped down and dried.
2. All Loctite sealants, retaining compounds, and gasket eliminators require 3 hours to set and 24 hours to fully cure. None of these materials should come into contact with oil or grease before this time.
4. Apply 518 Gasket Eliminator in a continuous bead, circling each bolt hole as shown. Do not spread.

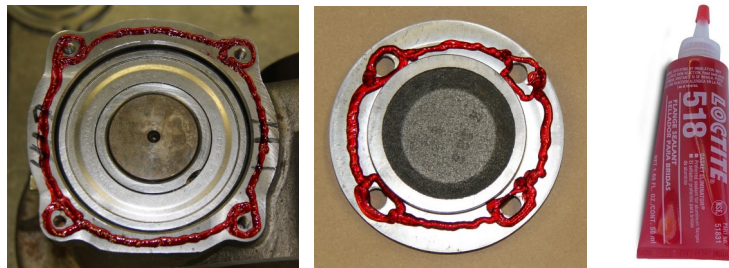
Issue 1, 5/28/15

## Gearcase / Side Cover - 518 Gasket Eliminator



Apply 518 to both gearcase and side cover

## Gearcase / End Cover - 518 Gasket Eliminator



## Shims (Side Cover or End Cover) - 7649 Primer



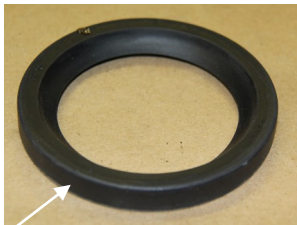
Note:

Spray both sides of the shim 'stack' with Loctite 7649 Primer. There is no need to spray each shim individually.

## Spur Gear Cover / Side Plate (if equipped) - 518 Gasket Eliminator



## Oil Seal - 598 RTV



Apply Loctite 598 RTV to the outside diameter of the oil seal

## Pipe Plug - 565 Sealant



Apply Loctite 565 Pipe Sealant to threads only.

