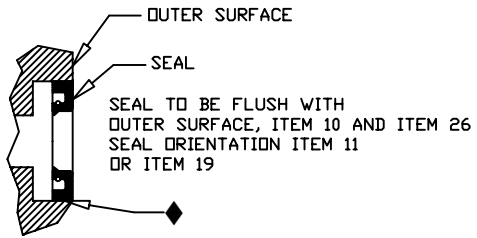
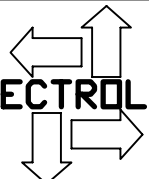
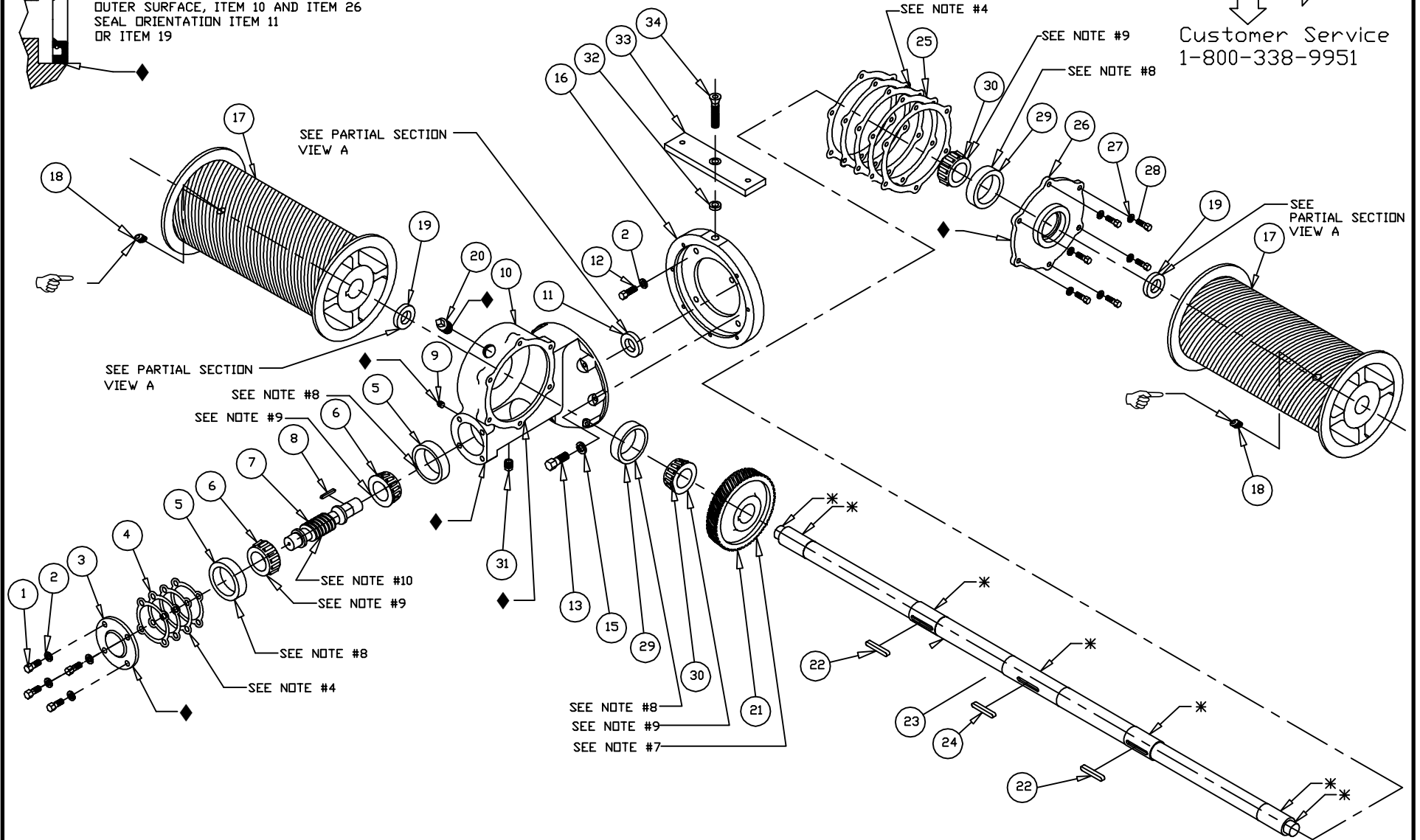


PARTIAL SECTION VIEW A




ELECTROLIFT
 Customer Service
 1-800-338-9951



A-Twin Hook-Overhead Mounted
 Gearcase Assembly
 Parts List
 Sheet 1 of 2

34	FS568	1	SCREW,FHSCS,1/2-13x1-3/4	☒SEE NOTE A
33	K3102	1	STRAP, ADAPTER, MOTOR, A-TH-OVR:FLR MTD	
32	K11123	1	SPACER, 9/16 ID, 1 OD, 1/2 LG	
31	FS333	1	PIPEPLUG,1/2 SQHD CORED	☒SEE NOTE A
30	DM7003	2	BEARING, TRB, CONE, 1.50 ID	☒SEE NOTE B
29	DM7004	2	BEARING, TRB, CUP, 3.00 OD	☒SEE NOTE B
28	FS122	6	SCREW,HHCS,5/16-18x7/8	☒SEE NOTE A
27	FS312	6	WASHER,L,5/16, PLAIN	☒SEE NOTE A
26	M304A	1	COVER, SIDE, GEAR CASE, A	
25	K10753	1	KIT, SHIM, A-HOIST, SIDE COVER	
24	K10849P4	1	KEY, 5/16x5/16, 1-1/4, "A" WORM WHEEL	
23	----	1	SHAFT, JOB SPECIFIC	
22	K10849P5	2	KEY, 5/16x5/16, 2, A:B DRUM SHAFT	
21	----	1	WORM WHEEL, SEE NOTE #5	
20	FS337	1	PIPEPLUG,1/2 SQHD CORED, W/STRAIGHT VENT	☒SEE NOTE A
19	DM7028	2	SEAL, SHAFT, 1.5 ID, 2.37 OD	☒SEE NOTE C
18	FS445	2	SOCKET HEAD SET SCREW 3/8-16x1/2, KNURLED	
17	----	2	DRUM, JOB SPECIFIC	
16	M2960A	1	ADAPTER, MOTOR, A-TH-OVR:FLR MTD	
15	FS310	7	WASHER,L,1/4 , PLAIN	☒SEE NOTE A
14	N/A	-	----	
13	FS571	7	SCREW,HHCS,1/4-20x1-1/2, GR2,PLAIN	☒SEE NOTE A
12	FS129	4	SCREW,HHCS,3/8-16x1, GR2,PLAIN	☒SEE NOTE A
11	DM7216	1	SEAL, SHAFT, 1 ID, 1.82 OD	☒SEE NOTE C
10	T478A	1	GEAR CASE, A TWIN HOOK HOIST	
9	FS336	1	PIPEPLUG,1/8 SQHD,CAST IRON, SOLID	☒SEE NOTE A
8	K10845P2	1	KEY, 3/16x3/16, 1-1/16, A MOTOR	
7	----	1	WORM SHAFT, SEE NOTE #5	
6	DM7000	2	BEARING, TRB, CONE, 1 ID	☒SEE NOTE B
5	DM7001	2	BEARING, TRB, CUP, 2.56 OD	☒SEE NOTE B
4	K10754	1	KIT, SHIM, A-HOIST, END COVER	
3	K101	1	COVER, END, GEAR CASE, A	
2	FS315	8	WASHER,L,3/8	☒SEE NOTE A
1	FS466	4	SCREW,HHCS,3/8-16x7/8	☒SEE NOTE A
ITEM #	PART #	QTY	DESCRIPTION	

BILL OF MATERIALS

NOTES:

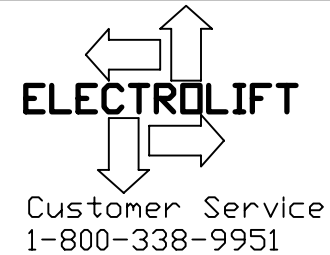
- 1) * - APPLY ANTISEIZE COMPOUND
- 2) ♦ - SEE LAST SHEET FOR LOCTITE SEALANT AND GASKET APPLICATION INSTRUCTIONS.
- 3) ☞ - APPLY BLUE TYPE THREADLOCK COMPOUND, TORQUE TO 24 FT-LBS
- 4) USE THE SAME AMOUNT AND COLOR OF SHIMS AS ORIGINAL SET.
- 5) IDENTIFICATION CHART

NO OF TEETH	WORM WHEEL P/N	WORM SHAFT P/N
44	M302	M301P1
55	M2856A	M2855
64	K903A	K940
- 6) OIL CAPACITY 12 OZ., EXXON CYLESSTIC TK680 OR EQUIV. E/L P/N DM7146 OR MOBIL SHC 634 OR EQUIV. (SYNTHETIC) E/L P/N DM7381
- 7) PRESS ITEM 21 ONTO ITEM 23 CENTRALLY LOCATED ON ITEM 24
- 8) PRESS ITEM INTO MATING HOUSING OR COVER
- 9) TO BE PRESSED ON MATING SHAFT
- 10) TAP WITH MALLETT AFTER PRESSING ITEM 5

☒ KIT NOTES:

- A) THIS PART CAN ONLY BE ORDERED AS PART OF GEARCASE HARDWARE KIT #K11256
- B) THIS PART CAN ONLY BE ORDERED AS PART OF GEARCASE BEARING KIT #K11151.
- C) THIS PART CAN ONLY BE ORDERED AS PART OF SEAL KIT #K11153.

D) FOR BOTH SEALS & SHIMS, ORDER SEAL & SHIM KIT #K11279.



A-Twin Hook-Overhead Mounted Gearcase Assembly Parts List Sheet 2 of 2

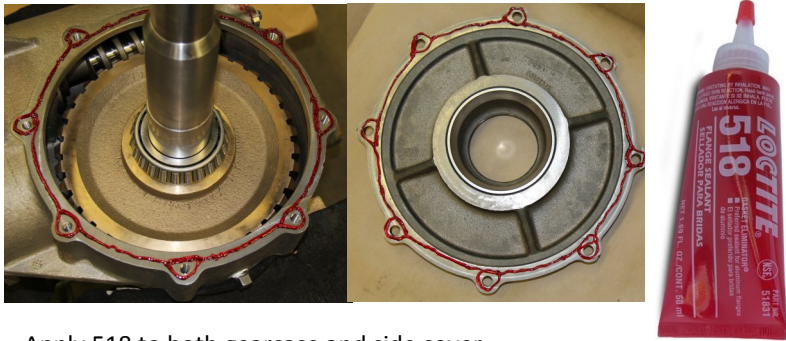
Type 'A', 'B', and 'BC' Hoist Gearbox

Notes:

1. Required components: 518 Gasket Eliminator, 565 Pipe Sealant, 598 RTV, and 7649 Primer
1. All metal surfaces to be cleaned with brake cleaner, acetone, or Loctite Cleaner/Degreaser. After cleaning, all surfaces will be wiped down and dried.
2. All Loctite sealants, retaining compounds, and gasket eliminators require 3 hours to set and 24 hours to fully cure. None of these materials should come into contact with oil or grease before this time.
4. Apply 518 Gasket Eliminator in a continuous bead, circling each bolt hole as shown. Do not spread.

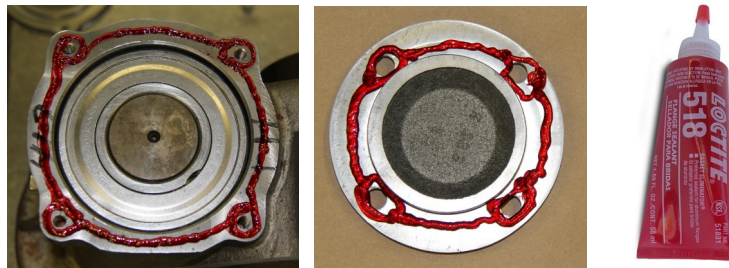
Issue 1, 5/28/15

Gearcase / Side Cover - 518 Gasket Eliminator



Apply 518 to both gearcase and side cover

Gearcase / End Cover - 518 Gasket Eliminator



Shims (Side Cover or End Cover) - 7649 Primer



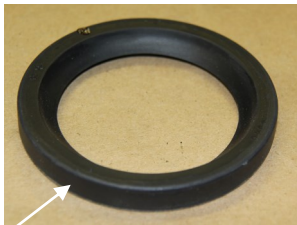
Note:

Spray both sides of the shim 'stack' with Loctite 7649 Primer. There is no need to spray each shim individually.

Spur Gear Cover / Side Plate (if equipped) - 518 Gasket Eliminator



Oil Seal - 598 RTV



Apply Loctite 598 RTV to the outside diameter of the oil seal

Pipe Plug - 565 Sealant



Apply Loctite 565 Pipe Sealant to threads only.

