

CAPACITY 3000 LBS.

INFORMATION REQUIRED
SEE SHEET 2 FOR SPECIFICATIONS

TRACK SIZE: _____

FLANGE WIDTH: _____

FLANGE THICKNESS: _____

HARDENED WHEELS:

NO

YES

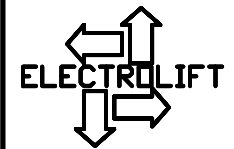
DIMENSION "A": _____

SPACER REQUIRED:

NO

YES

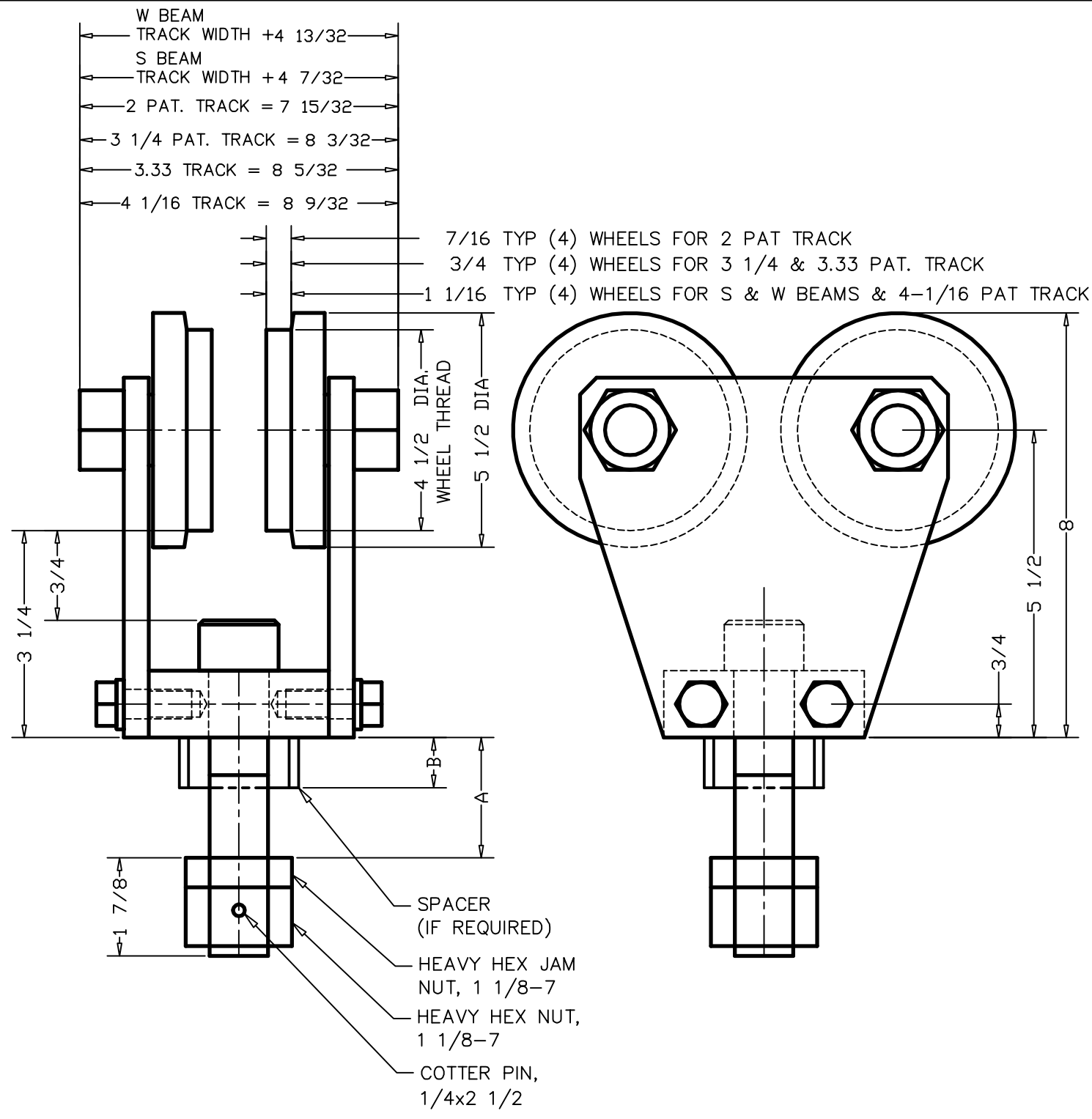
DIMENSION "B": _____



ELECTROLIFT, INC.
204 SARGEANT AVE.
CLIFTON, NJ 07013
PH: 973-471-0204
FAX: 973-471-2814
www.electrolift.com

REV.	ECO#	DATE	BY:
IDLER TROLLEY PART NUMBER: M12521		DATE: 12/12/07	SCALE: NONE DWG SIZE: A DRAWN BY: DR

DRAWING NO:
M12521-WPDF
SHEET 1 OF 2



CAPACITY 3000 LBS.

SPECIFICATIONS

PROVIDE SHEET 1 TO ELECTROLIFT

GENERAL NOTES:

1. CAPACITY OF TROLLEY IS NOT TO BE EXCEEDED
2. FACTOR OF SAFETY 5 TO 1 MINIMUM
3. VISTA GREEN ENAMAL PAINT STANDARD
4. NOT DESIGNED FOR TRAVERSING TRACKS WITH A RADIUS.
5. CONSULT ELECTROLIFT'S SALES DEPARTMENT FOR ADDITIONAL FEATURES

WHEEL ASSEMBLY

STANDARD HARDNESS:

BRINELL 143/ROCKWELL B78

OPTIONAL HARDENED WHEEL (STD FOR PAT. TRACK):

BRINELL 475/ROCKWELL C50

BEARING L10HR LIFE:

34,995 HRS AT 50 FPM

TRACK TYPE

PATENTED TRACKS: FLAT PROFILE AS SHOWN

S-BEAM TRACK: CURVED PROFILE

W-BEAM TRACK: CURVED PROFILE

SPACER LENGTH

REQUIRED IF DIMENSION "C"

EXCEEDS 1/2"

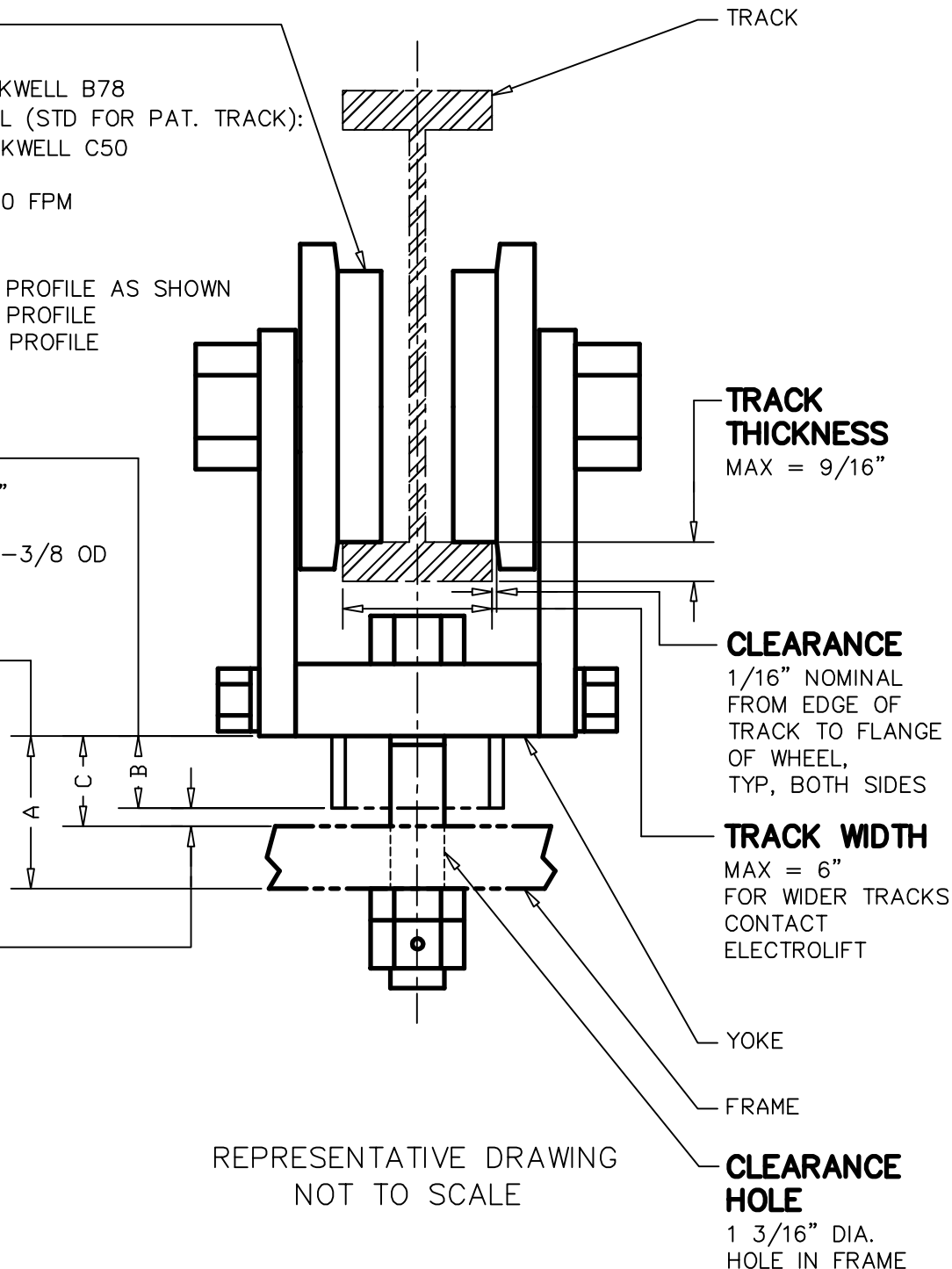
MATERIAL = TUBING, 2 IDx2-3/8 OD

BOLT SPAN

1 3/4" MAX
FOR LARGER
DIMENSIONS,
CONTACT
ELECTROLIFT

GAP

1/8" MIN. GAP REQUIRED
FROM BOTTOM OF YOKE
OR SPACER TO BOTTOM
OF FRAME

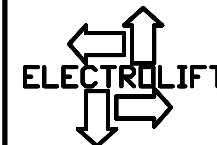


TRACK THICKNESS
MAX = 9/16"

CLEARANCE
1/16" NOMINAL
FROM EDGE OF
TRACK TO FLANGE
OF WHEEL,
TYP, BOTH SIDES

TRACK WIDTH
MAX = 6"
FOR WIDER TRACKS
CONTACT
ELECTROLIFT

CLEARANCE HOLE
1 3/16" DIA.
HOLE IN FRAME



ELECTROLIFT, INC.
204 SARGEANT AVE.
CLIFTON, NJ 07013
PH: 973-471-0204
FAX: 973-471-2814
www.electrolift.com

REV.	ECO#	DATE	BY:
IDLER TROLLEY PART NUMBER:		M12521	
DATE: 12/12/07	SCALE: NONE	DWG SIZE: A	DRAWN BY: DR
DRAWING NO: M12521-WPDF			
SHEET 2 OF 2			