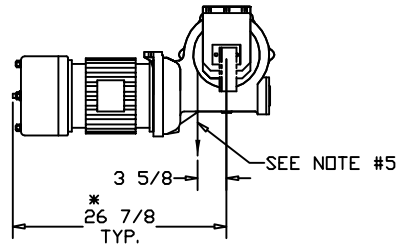
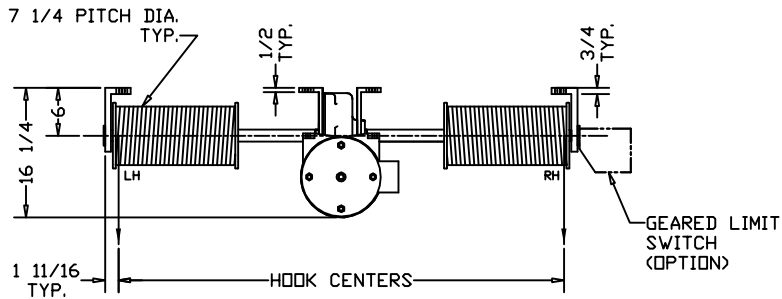
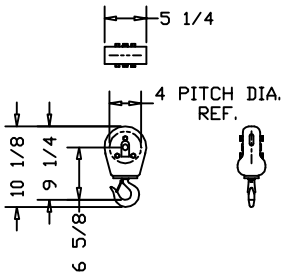


HOIST MOUNTING DETAIL
HOLE LOCATIONS



*ALLOW 6\"/>



M-1041-A HOOK BLOCK
1000 LB. CAPACITY
4\"/>

CUSTOMER:

ELECTROLIFT AUTHORIZED DISTRIBUTOR:

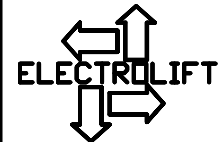
REFERENCE NO.:

CATALOG #

| | 275-OH | 277-OH | - | - |
|---|------------------------|--------|---|---|
| SPEED (FPM): | 25 | 40 | - | - |
| HP: | 4 | 4 | - | - |
| MAX. HOOK CENTERS (IN.): (SEE NOTE #4) | 120 | 106 | - | - |
| LIFT (FT.): | 40 | | | |
| CAPACITY (LBS): | 2000 | | | |
| PRIMARY VOLTAGE: | 460 or 230 (3 PH. STD) | | | |
| CONTROL VOLTAGE: | 115 (STD) | | | |
| HOIST WEIGHT (LBS): | 750 | | | |
| REEVING: | 2 PART SINGLE | | | |

HOIST NOTES:

- STANDARD CONTROL BOX WILL BE SHIPPED LOOSE WITH HOIST, TO BE MOUNTED BY CUSTOMER.
- CONTROL BOX SIZE TO BE DETERMINED UPON CONTROLS SELECTION AT TIME OF ORDER.
- ALL ELECTRICAL CONNECTIONS BETWEEN HOIST AND CONTROL BOX TO BE COMPLETED BY CUSTOMER, UNLESS OTHERWISE SPECIFIED.
- FOR HOOK CENTERS LARGER THAN SPECIFIED MAXIMUM VALUE (SEE ABOVE), CONTACT ELECTROLIFT.
- WIRE ROPE CAN PAY OFF OPPOSITE SIDE OF DRUM, IF SPECIFIED.
- FOR SINGLE LINE APPLICATIONS, SPEED AND LIFT WILL BE TWICE THE SPECIFIED VALUE AND THE CAPACITY WILL BE HALF THE SPECIFIED VALUE.
- WIRE ROPE DEAD ENDING TO BE PROVIDED BY CUSTOMER



ELECTROLIFT, INC.
204 SARGEANT AVE.
CLIFTON, NJ 07013
PH: 973-471-0204
FAX: 973-471-2814
www.electrolift.com

| REV. | ECO# | DATE | BY: |
|------|------|------|-----|
| | | | |

HOIST TYPE: "B" TWIN HOOK

CONFIGURATION: OVERHEAD MOUNTED

| DATE: | SCALE: | DWG SIZE: | DRAWN BY: |
|---------|--------|-----------|-----------|
| 8/26/04 | 1:16 | B | AR |

| CATALOG NO.: | DRAWING NO.: |
|------------------|--------------|
| 275-OH 277-OH | B-167 |