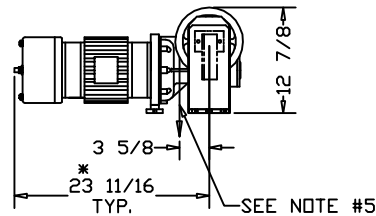
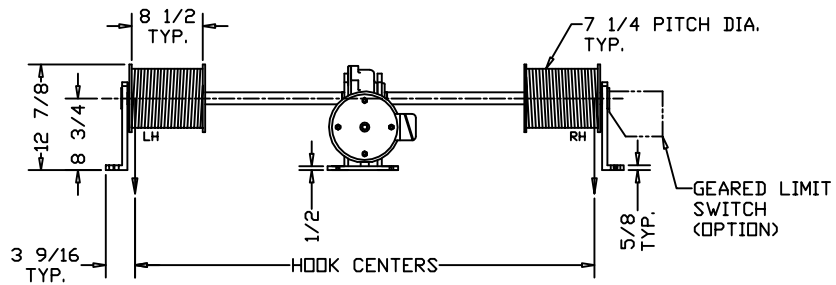
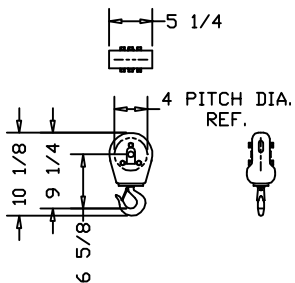


HOIST MOUNTING DETAIL  
HOLE LOCATIONS



\*ALLOW 6" CLEARANCE TO SERVICE BRAKE



M-1041-A HOOK BLOCK  
1000 LB. CAPACITY  
4" PITCH DIA.  
(2) SUPPLIED PER HOIST STD.  
SHIPPED LOOSE

CUSTOMER:

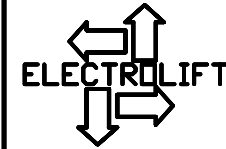
ELECTROLIFT AUTHORIZED DISTRIBUTOR:

REFERENCE NO.:

CATALOG #

904-FL 907-FL - -

|  |  |       |   |   |
|--|--|-------|---|---|
| SPEED (FPM):                           | 20   | 30    | - | - |
| HP:                                    | 1  | 1-1/2 | - | - |
| MAX. HOOK CENTERS (IN.): (SEE NOTE #4) | 120  | 120   | - | - |
| LIFT (FT.):                            | 20   |       |   |   |
| CAPACITY (LBS):                        | 1000   |       |   |   |
| PRIMARY VOLTAGE:                       | 460 or 230 (3 PH. STD)   |       |   |   |
| CONTROL VOLTAGE:                       | 115 (STD)  |       |   |   |
| HOIST WEIGHT (LBS):                    | 550  |       |   |   |
| REEVING:                               | 2 PART SINGLE  |       |   |   |
| HOIST NOTES:                           | <ol style="list-style-type: none"> <li>STANDARD CONTROL BOX WILL BE SHIPPED LOOSE WITH HOIST. TO BE MOUNTED BY CUSTOMER.</li> <li>CONTROL BOX SIZE TO BE DETERMINED UPON CONTROLS SELECTION AT TIME OF ORDER.</li> <li>ALL ELECTRICAL CONNECTIONS BETWEEN HOIST AND CONTROL BOX TO BE COMPLETED BY CUSTOMER, UNLESS OTHERWISE SPECIFIED.</li> <li>FOR HOOK CENTERS LARGER THAN SPECIFIED MAXIMUM VALUE (SEE ABOVE), CONTACT ELECTROLIFT.</li> <li>WIRE ROPE CAN PAY OFF OPPOSITE SIDE OF DRUM, IF SPECIFIED.</li> <li>FOR SINGLE LINE APPLICATIONS, SPEED AND LIFT WILL BE TWICE THE SPECIFIED VALUE AND THE CAPACITY WILL BE HALF THE SPECIFIED VALUE.</li> <li>WIRE ROPE DEAD ENDING TO BE PROVIDED BY CUSTOMER</li> </ol> |       |   |   |



ELECTROLIFT, INC.  
204 SARGEANT AVE.  
CLIFTON, NJ 07013  
PH: 973-471-0204  
FAX: 973-471-2814  
www.electrolift.com

REV. ECO# DATE BY:

HOIST TYPE: "A" TWIN HOOK

CONFIGURATION: FLOOR MOUNTED

DATE: 8/18/04 SCALE: 1:16 DWG SIZE: B DRAWN BY: AR

CATALOG NO.: 904-FL 907-FL DRAWING NO.: A-124