

# CAPACITY 1000 LBS.

INFORMATION REQUIRED  
SEE SHEET 2 FOR SPECIFICATIONS

TRACK SIZE:  
\_\_\_\_\_

FLANGE WIDTH:  
\_\_\_\_\_

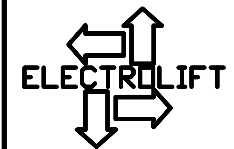
FLANGE THICKNESS:  
\_\_\_\_\_

HARDENED WHEELS:  
 NO  
 YES

DIMENSION "A": \_\_\_\_\_

SPACER REQUIRED:  
 NO  
 YES

DIMENSION "B": \_\_\_\_\_



ELECTROLIFT, INC.  
 204 SARGEANT AVE.  
 CLIFTON, NJ 07013  
 PH: 973-471-0204  
 FAX: 973-471-2814  
 www.electrolift.com

REV.	ECO#	DATE	BY:
IDLER TROLLEY PART NUMBER: M1168B			
DATE: 12/12/07	SCALE: NONE	DWG SIZE: A	DRAWN BY: DR

DRAWING NO:  
M1168B-WPDF  
SHEET 1 OF 2

# CAPACITY 1000 LBS.

## SPECIFICATIONS

PROVIDE SHEET 1 TO ELECTROLIFT

### GENERAL NOTES:

1. CAPACITY OF TROLLEY IS NOT TO BE EXCEEDED
2. FACTOR OF SAFETY 5 TO 1 MINIMUM
3. VISTA GREEN ENAMEL PAINT STANDARD
4. NOT DESIGNED FOR TRAVERSING TRACKS WITH A RADIUS.
5. CONSULT ELECTROLIFT'S SALES DEPARTMENT FOR ADDITIONAL FEATURES

### WHEEL ASSEMBLY

STANDARD HARDNESS:

BRINELL 143/ROCKWELL B78

OPTIONAL HARDENED WHEEL:

BRINELL 475/ROCKWELL C50

BEARING L10HR LIFE:

36,191 HRS AT 50 FPM

### TRACK TYPE

S-BEAM TRACK: CURVED PROFILE AS SHOWN

W-BEAM TRACK: FLAT PROFILE PROVIDED

PATENTED TRACK: SEE TROLLEY M2655B

### SPACER LENGTH

REQUIRED IF DIMENSION "C"

EXCEEDS 1/2"

MATERIAL = TUBING, 2 IDx2-3/8 OD

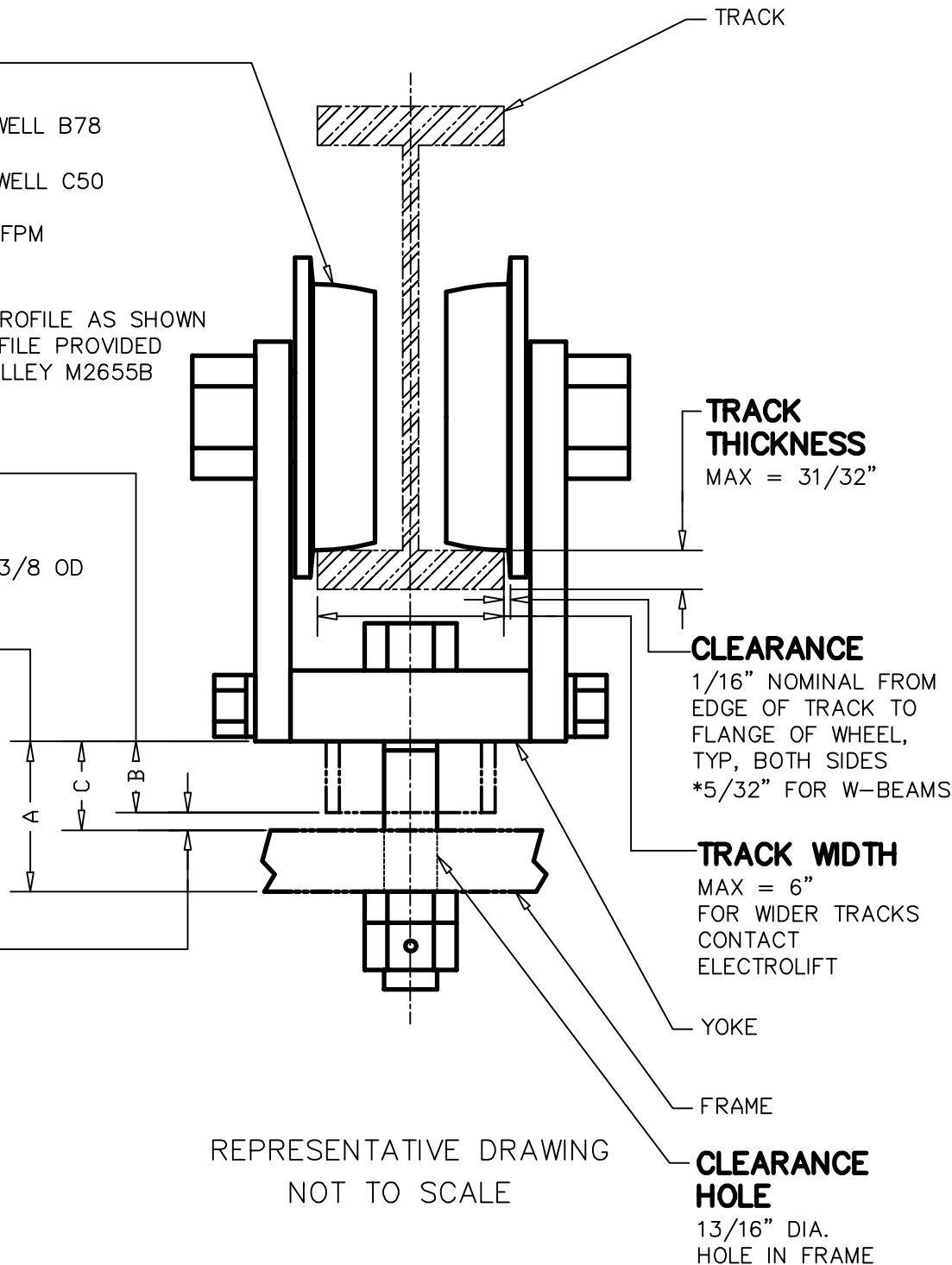
### BOLT SPAN

2" MAX.

FOR LARGER DIMENSIONS,  
CONTACT  
ELECTROLIFT

### GAP

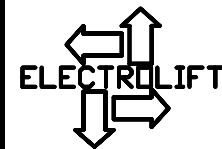
1/8" MIN. GAP REQUIRED  
FROM BOTTOM OF YOKE  
OR SPACER TO BOTTOM  
OF FRAME



REPRESENTATIVE DRAWING  
NOT TO SCALE

### CLEARANCE HOLE

13/16" DIA.  
HOLE IN FRAME



ELECTROLIFT, INC.  
204 SARGEANT AVE.  
CLIFTON, NJ 07013  
PH: 973-471-0204  
FAX: 973-471-2814  
www.electrolift.com

REV.	ECO#	DATE	BY:
IDLER TROLLEY PART NUMBER:		M1168B	
DATE: 12/12/07	SCALE: NONE	DWG SIZE: A	DRAWN BY: DR
DRAWING NO:			
M1168B-WPDF			
SHEET 2 OF 2			