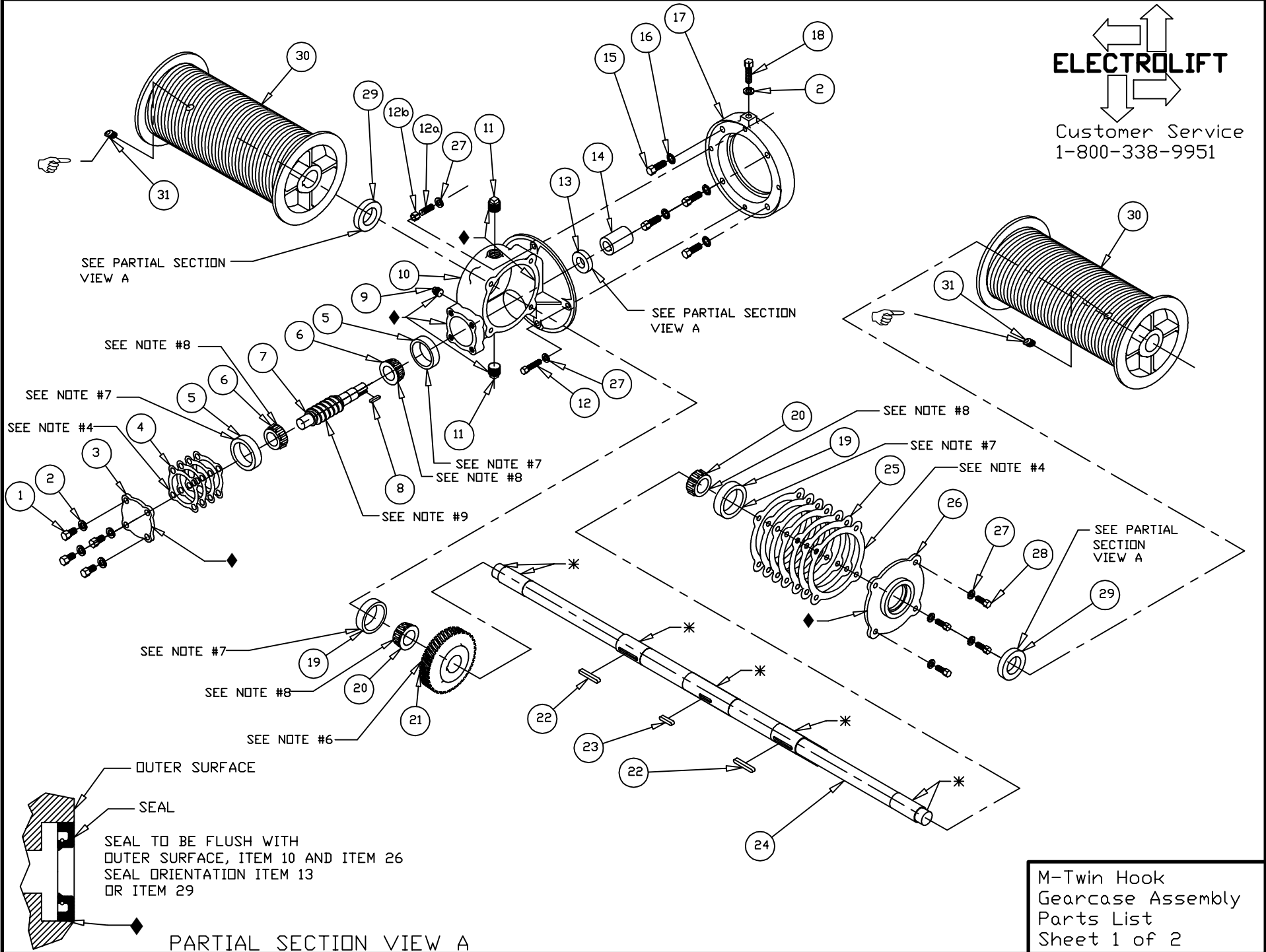
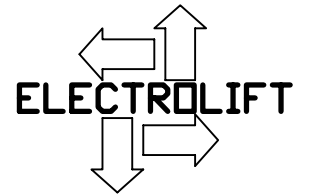


ELECTROLIFT
 Customer Service
 1-800-338-9951



31	FS445	2	SOCKET HEAD SET SCREW 3/8-16x1/2, KNURLED	
30	----	2	DRUM, JOB SPECIFIC	
29	DM7035	2	SEAL, SHAFT, 1.25 ID, 2.12 OD	☒SEE NOTE C
28	FS120	4	SCREW,HHCS,5/16-18x3/4, GR2	☒SEE NOTE A
27	FS312	8	WASHER,L,5/16, PLAIN	☒SEE NOTE A
26	K1603P1	1	COVER, SIDE, GEAR CASE, M	
25	K10751	1	KIT, SHIM, SDT-M, SIDE COVER	
24	----	1	DRUM SHAFT, JOB SPECIFIC	
23	K10846P3	1	KEY, 1/4x1/4, 1-1/8	
22	K10846P5	2	KEY, 1/4x1/4,1-3/4, M DRUM	
21	K958A	1	WORM WHEEL, M HOIST AND TROLLEY, 40T, 40:1	
20	DM7213	2	BEARING, TRB, CONE, 1.25 ID	☒SEE NOTE B
19	DM7214	2	BEARING, TRB, CUP, 2.31 OD	☒SEE NOTE B
18	FS130	1	SCREW,HHCS,3/8-16x1-1/4, GR2,PLAIN	☒SEE NOTE A
17	K3314	1	ADAPTOR, MOTOR, P-419, M HOIST	
16	FS317	4	WASHER,INT.TOOTH,3/8,PLATED	☒SEE NOTE A
15	FS447	4	SCREW,SHCS,3/8-16x1	☒SEE NOTE A
14	K963	1	SLEEVE, MOTOR SHAFT, M HOIST	
13	DM7034	1	SEAL, SHAFT, .75 ID, 1.50 OD	☒SEE NOTE C
12b	FS253	1	NUT,HEX,5/16-18	☒SEE NOTE A
12a	FS610	1	THREADEDSTUD,FULLY,5/16-18x2	☒SEE NOTE A
12	FS126	3	SCREW,HHCS,5/16-18x1-1/2, GR2,PLAIN	☒SEE NOTE A
11	FS334	2	PIPEPLUG,1/4,SQHD,STEEL	☒SEE NOTE A
10	K1603	1	GEAR CASE, M-TH HOIST	
9	FS336	1	PIPEPLUG,1/8 SQHD,CAST IRON, SOLID	☒SEE NOTE A
8	K10845P3	1	KEY, 3/16x3/16x1-11/16	
7	K957	1	WORM SHAFT, M HOIST AND TROLLEY, FOR 40T, 40:1	
6	DM7211	2	BEARING, TRB, CONE, .75 ID	☒SEE NOTE B
5	DM7212	2	BEARING, TRB, CUP, 2.12 OD	☒SEE NOTE B
4	K10752	1	KIT, SHIM, SDT-M, END COVER	
3	K960	1	COVER, END, GEAR CASE, M	
2	FS315	5	WASHER,L,3/8, PLAIN	☒SEE NOTE A
1	FS466	4	SCREW,HHCS,3/8-16x7/8, GR2,PLAIN	☒SEE NOTE A
ITEM #	PART #	QTY	BILL OF MATERIALS/ DESCRIPTION	



Customer Service
1-800-338-9951

NOTES:

- 1) * - APPLY ANTISEIZE COMPOUND
- 2) ♦ - SEE LAST SHEET FOR LOCTITE SEALANT AND GASKET APPLICATION INSTRUCTIONS.
- 3) ☞ - APPLY BLUE TYPE THREADLOCK COMPOUND,
- 4) USE THE SAME AMOUNT AND COLOR OF SHIMS AS ORIGINAL SET.
- 5) OIL CAPACITY 8 OZ. EXXON CYLESSTIC TK680 OR EQUIV. E/L P/N DM7146 MOBIL SHC 634 OR EQUIV. (SYNTHETIC) E/L P/N DM7381
- 6) PRESS ITEM 21 ONTO ITEM 24 CENTRALLY LOCATED ON ITEM 23
- 7) PRESS ITEM INTO MATING HOUSING OR COVER
- 8) TO BE PRESSED ON MATING SHAFT
- 9) TAP WITH MALLET AFTER PRESSING ITEM 6

☒ KIT NOTES:

A) THIS PART CAN ONLY BE ORDERED AS PART OF GEARCASE HARDWARE KIT #K11270.

B) THIS PART CAN ONLY BE ORDERED AS PART OF GEARCASE BEARING KIT #K11164.

C) THIS PART CAN ONLY BE ORDERED AS PART OF GEARCASE SEAL KIT #K11166.

D) FOR BOTH SEALS & SHIMS, ORDER SEAL & SHIM KIT #K11284.

M-Twin Hook
Gearcase Assembly
Parts List
Sheet 2 of 2

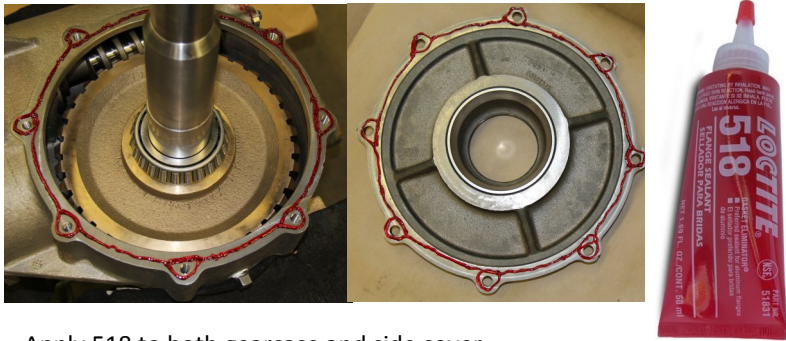
Type 'A', 'B', and 'BC' Hoist Gearbox

Notes:

1. Required components: 518 Gasket Eliminator, 565 Pipe Sealant, 598 RTV, and 7649 Primer
1. All metal surfaces to be cleaned with brake cleaner, acetone, or Loctite Cleaner/Degreaser. After cleaning, all surfaces will be wiped down and dried.
2. All Loctite sealants, retaining compounds, and gasket eliminators require 3 hours to set and 24 hours to fully cure. None of these materials should come into contact with oil or grease before this time.
4. Apply 518 Gasket Eliminator in a continuous bead, circling each bolt hole as shown. Do not spread.

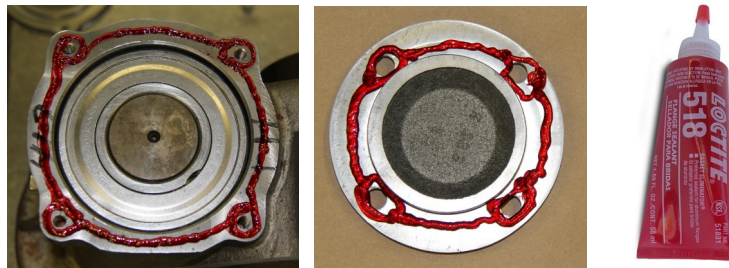
Issue 1, 5/28/15

Gearcase / Side Cover - 518 Gasket Eliminator



Apply 518 to both gearcase and side cover

Gearcase / End Cover - 518 Gasket Eliminator



Shims (Side Cover or End Cover) - 7649 Primer



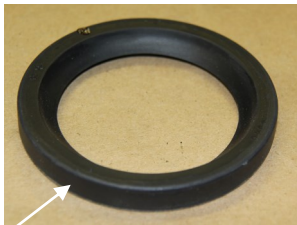
Note:

Spray both sides of the shim 'stack' with Loctite 7649 Primer. There is no need to spray each shim individually.

Spur Gear Cover / Side Plate (if equipped) - 518 Gasket Eliminator



Oil Seal - 598 RTV



Apply Loctite 598 RTV to the outside diameter of the oil seal

Pipe Plug - 565 Sealant



Apply Loctite 565 Pipe Sealant to threads only.

