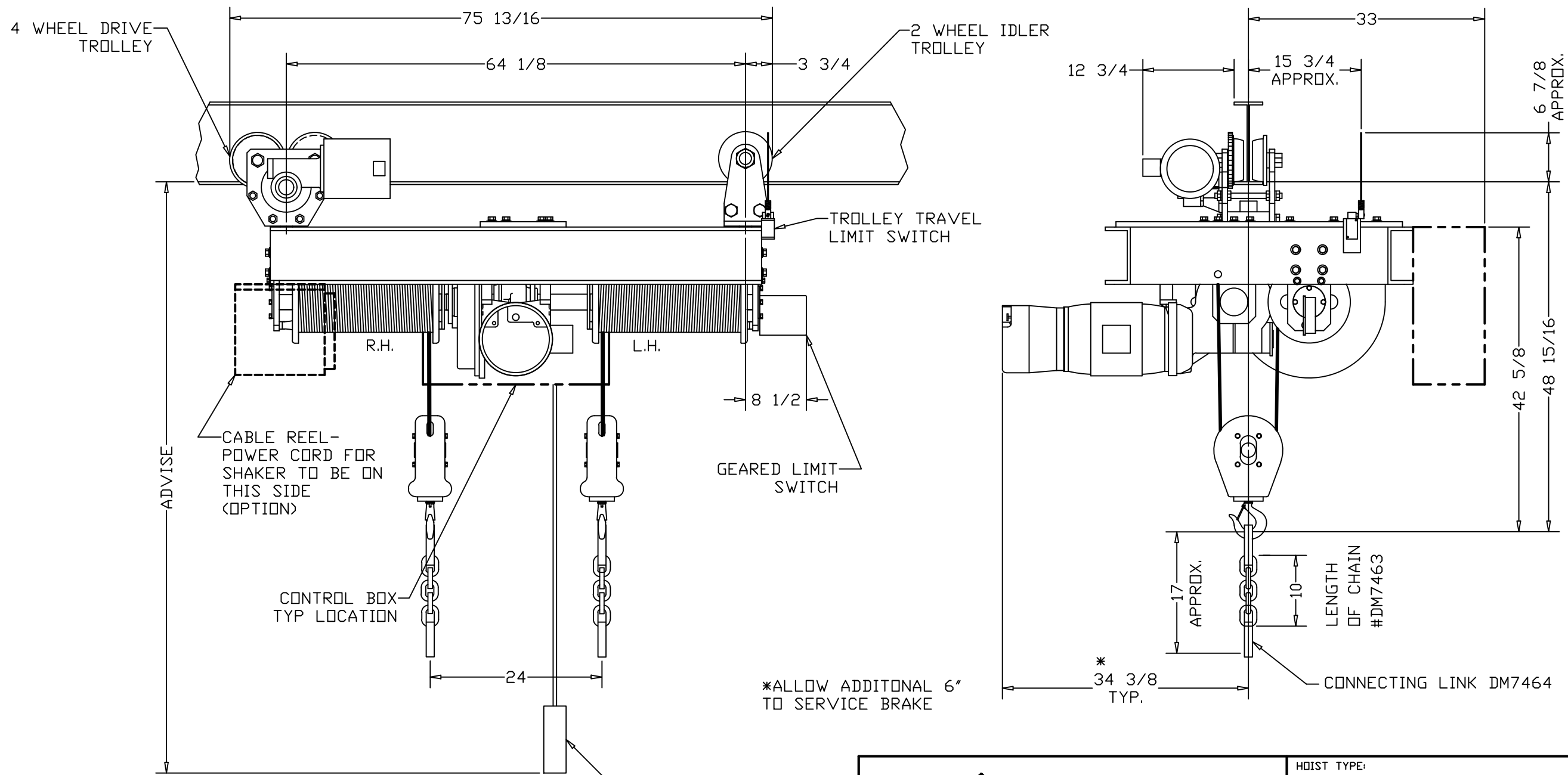
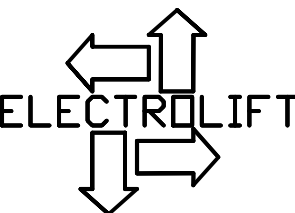


ISSUE 1  
10/24/07  
ISSUE 2  
2/18/11  
ADDED  
HOIST WT.  
ISSUE 3  
6/19/23  
UPDATED  
HOIST WT.



CAPACITY - 12,000 LBS  
SPEED - 12 FPM  
LIFT - 40 FT  
REEVING - 2 PART SINGLE  
PRIMARY VOLTAGE - 460/3/60  
SECONDARY VOLTAGE - 115/1/60  
HOIST MOTOR FLA - 10.1A  
TROLLEY MOTOR FLA - 1.5A  
HOIST BRAKE CURRENT RATING - .2A  
APPROX. HOIST WEIGHT - 3000 LBS

APPROX. WHEEL LOADINGS:  
4 WHEEL DRIVE TROLLEY - 3750 LBS/WHEEL PAIR  
2 WHEEL IDLER TROLLEY - 7500 LBS/WHEEL PAIR

	ELECTROLIFT, INC. 204 SARGEANT AVE. CLIFTON, NJ 07013 PH: 973-471-0204 FAX: 973-471-2814 www.electrolift.com		HOIST TYPE: BC-3P CAR SHAKER	
			CONFIGURATION: SIDE DRIVE TROLLEY CLASS II, DIV. II, GROUP F	
	DATE: 10/24/07	SCALE: 1/16	DWG SIZE: B	DRAWN BY: AR
	CATALOG NO.: 869-SD	DRAWING NO.: CS-103		
REV.	ECO#	DATE	BY:	