

RAISING THE STANDARD SINCE 1932

CUSTOM ENGINEERED SOLUTIONS

Electrolift offers custom engineered solutions for all manufacturing applications where quality and reliability are critical to success.

Shupper-Brickle Equipment contacted the Electrolift team to help them find a solution to this lifting challenge.

The Challenge: Shupper-Brickle Equipment’s customer required a hoist to meet extensive safety standards including dual redundant hoist brakes. For most applications, a dual braking feature refers to the standard hoist motor brake plus a Weston type mechanical load brake. However, the hoist in question would be used with a load bar on the hook at all times, and a mechanical load brake requires a removal of all weight from the hook between picks to allow the required lubrication between the disks.



Left: True vertical lift and low headroom highlight Electrolift’s simple and effective design.

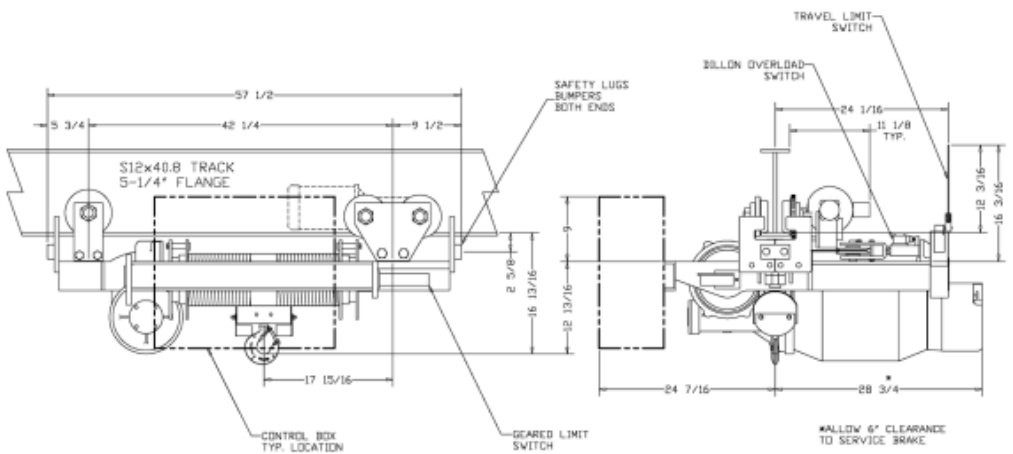
Right: Accessibility of controls for inspection and adjustment make Electrolift the favorite for plant maintenance.

The Solution: Electrolift hoists are manufactured with a worm gear drive for high-powered lifting that also acts as a second load brake. A high-ratio worm gear is considered a secondary brake, because it resists being back-driven and won’t lock up. The hoist motor can transmit motion through the gear reducer, but the load cannot transmit motion back through the gear reducer.

The final unit was a 5000 lb wire rope hoist with true vertical lift built for this low-headroom application with close end approaches. To meet the end-user’s safety requirements, the hoist also included motor thermal protection for both the hoist and trolley motors, safety drop lugs on the trolleys, a trolley travel limit switch with adjustable triggers, a geared upper and lower limit switch, and an overload device configured for no loss of headroom.

LOW HEADROOM SINGLE HOOK HOIST

[CLICK HERE TO DOWNLOAD](#)



WHEEL LOADINGS:

4 WHEEL DRIVE TROLLEY - 3666 LBS PER WHEEL PAIR
 2 WHEEL IDLER TROLLEY - 2869 LBS PER WHEEL PAIR

CAPACITY - 5000 LBS
 LIFT SPEED - 18 FPM
 TROLLEY SPEED - 35 FPM
 LIFT - 24 FT
 REEVING - 2 PART DOUBLE
 PRIMARY VOLTAGE - 460/3/Ø
 SECONDARY VOLTAGE - 115/1/Ø
 SERIAL NO. - 204311
 APPROX HOIST WEIGHT - 1200 LBS



Contact us to discuss your unique wire rope hoist application needs.

