



RAISING THE STANDARD SINCE 1932

CUSTOM ENGINEERED SOLUTIONS

Caldwell Beam Completes Automated Lifting System

Illinois Electric Works oversaw the installation of a 2-ton capacity monorail crane system at a heavy truck manufacturer, featuring a 1-ton capacity twin-hook Caldwell lifting beam.

The Challenge: The end-user sought a material handling solution for separating frame rails in preparation for its assembly line process.

The Solution: *Illinois Electric Works* was initially contacted about the provision of a gantry, but a permanent monorail was decided upon during further consultation. Another Illinois company, *Handling Systems International* (HSI), led the engineering phase of the project, while *Electrolift* designed a 2-ton capacity twin-hook hoist with a rigid (lug) mount to the beam.

The final piece of the system was the all-important 353-inch long beam that holds the magnets that are used to lift the material. *Align Production Systems* was the integrator that built everything around the system.

[**READ THE FULL CASE STUDY**](#)

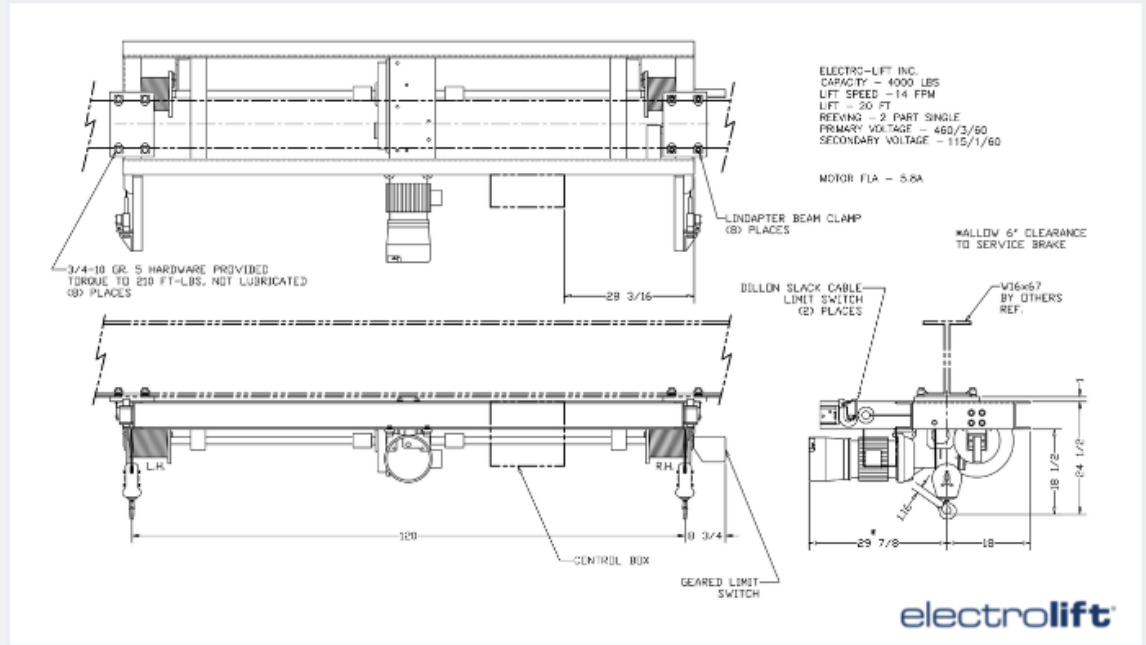
Electrolift offers custom engineered solutions for all manufacturing applications where quality and reliability are critical to success.



Top left: The centerpiece of the installation was a 1-ton capacity twin-hook Caldwell lifting beam. Top right: Electrolift designed a 2-ton capacity twin-hook hoist with a rigid (lug) mount to the beam. Bottom left: The system was assembled and tested onsite at HSI prior to shipment, including a load test. Bottom right: The system was completely designed from the ground up.



2-TON CAPACITY TWIN HOOK HOIST
[CLICK HERE TO DOWNLOAD](#)



Contact us to discuss your unique wire rope hoist application needs.

